

A compact solution for flexible latching: our 90°
Redirect for Multi-Point Locking System



01 Requirements

“Often the only way to ensure convenient and secure latching around a corner is with a solution that can be adapted to the specific application and allows a sealing pressure that remains uniform.

Our solution: the 90° Redirect for Multi-Point Locking System for secure universal application with multiple latching points in just one closing process.”

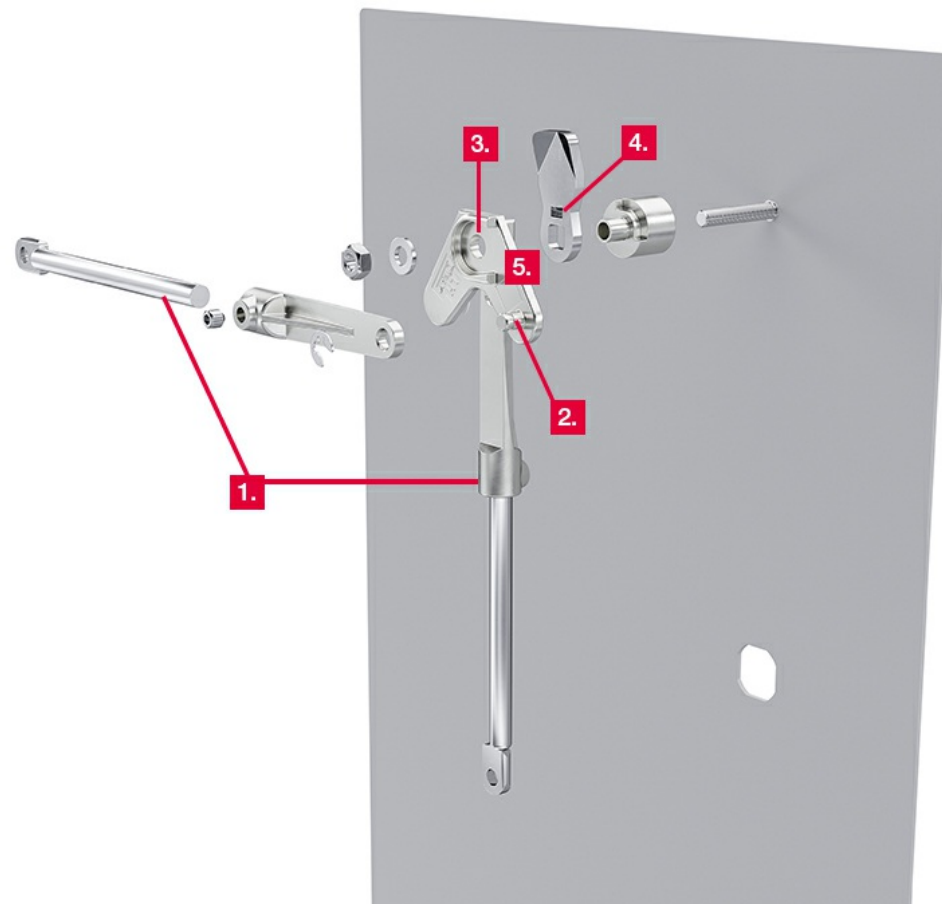
Mario Sauerbier, Junior Product Manager



02 Product Advantages

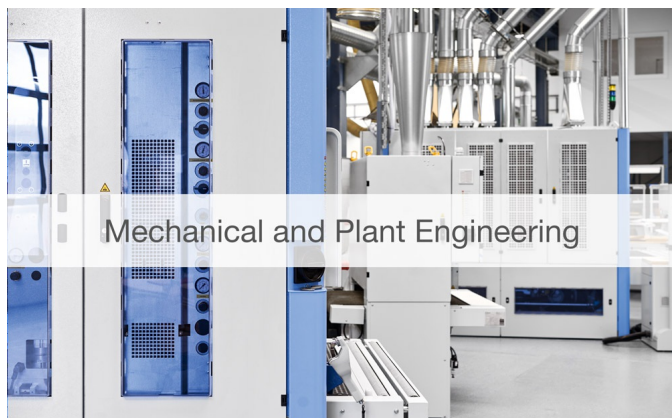
Full-featured and consistent

1. Compact: 90° Redirect with bidirectional latch
2. Adaptable: for use of round and flat rods plus cams with and without stop
3. Practical: cam mounting on both sides offset by 90° for universal application on left and right hand doors
4. Secure: additional latching points for secure latching around a corner while the sealing pressure remains uniform
5. Protected against corrosion: the 90° Redirect has an especially long service life due to the material zinc die and the zinc plated surface



03 Application Areas

Smooth operation and suitable for universal applications: the 90° Redirect for Multi-Point Locking System can be adapted to a wide range of different applications and allows for uniform sealing pressure.



Mechanical and Plant Engineering



Switch Cabinet Construction

Interested?

We would be happy to become familiar with your application as well and find a solution that is tailor-made to meet your requirements.

Our contact information can be found on our website, simply click [here](#).



Medical Device Manufacturing



Sheet-Metal Fabrication

The best solution for every application

Are you looking for more product solutions for multi-point locking systems?

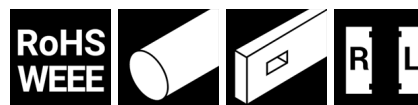
No problem, simply click [here](#) for further information.

04 Dimensions / Order Options

Material

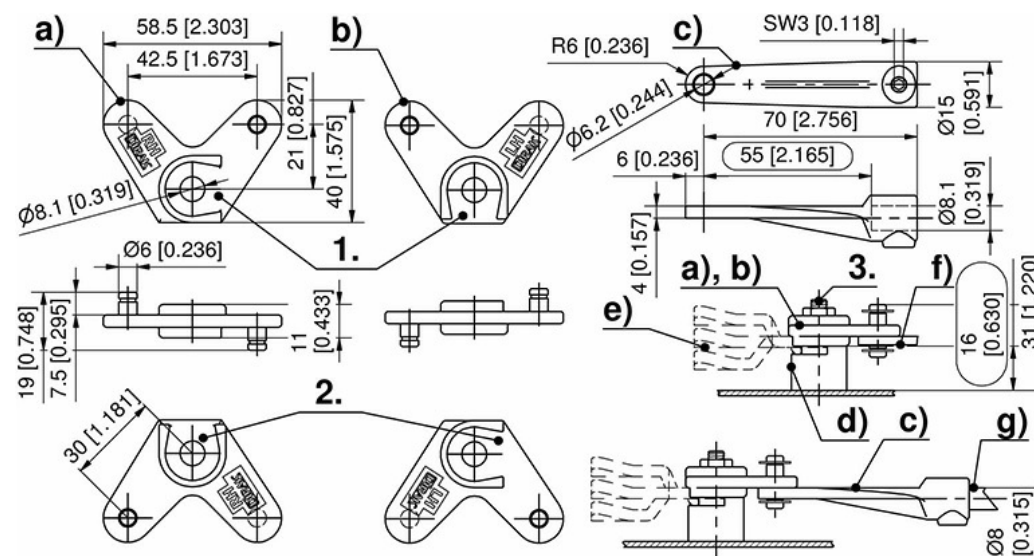
90° Redirect, adapter for round rods and spacer: zinc die, zinc plated

C-clip and setscrew: steel, zinc plated



Remarks


- 1.) Cam position
- 2.) On the back side of the redirect cam position turned 90°
- 3.) Assembly spacer on weld-stud M6x32
- c) Adapter for round rods (must be ordered by using round rods Ø8)
- d) H-dimension 18 mm only for sheet thickness 2 mm
- f) For the use of flat rods please contact us



90° Redirect for Multi-Point Locking System

	Product system	Version	Installation position	Packaging unit	Part number	Link
a)	1-263.01	RH version	LH door top / RH door bottom	10 pcs.	100-9613.00-00001	
b)	1-263.01	LH version	LH door bottom/ RH door top	10 pcs.	100-9613.00-00002	

Adapter for Round Rods

	Product system	for round rod	Packaging unit	Part number	Link
c)	1-263.01	Ø8 mm	10 pcs.	200-9637.00-00000	

Specific Accessories

	Description	Packaging unit	Part number	Link
d)	Spacer	10 pcs.	200-2811.35-00000	

Contact



DIRAK GmbH –
A Member of DIRAK Group

DIRAK Dieter Ramsauer
Konstruktionselemente GmbH
Königsfelder Straße 1
58256 Ennepetal
Germany

Phone: +49 (0) 2333 / 837-0

Fax: +49 (0) 2333 / 837-103

Email: info@dirak.de

Imprint

DIRAK Dieter Ramsauer
Konstruktionselemente GmbH
Königsfelder Straße 1
58256 Ennepetal
Germany

Phone: +49 (0) 2333 / 837-0
Fax: +49 (0) 2333 / 837-103
Email: info@dirak.de

Represented by:
Jens Boche

Entered in the trade register
Commercial Register AG Hagen,
HRB 7977
Sales Tax ID Number (VAT No.)
DE 261 585 314
Last update: June 2023