

Hinge with Fastening Bracket

The stepped mounting surface on the back of each hinge half allows for easy alignment in the cutout and the gasketed fastening brackets can be tightened with a single screw, allowing for easy hinge positioning



01 Requirements

To meet the requirements of industrial applications, the hinges must be sturdy, robust, and durable. Additionally, the hinges should offer simple assembly, high strength, and flexible usage.

For these applications, we have developed a hinge with fastening bracket, which ensures a precise fit in the rectangular cutout and allows for easy installation using only one screw. Additionally, the seals on the hinge provide protection against the ingress of water and dust.

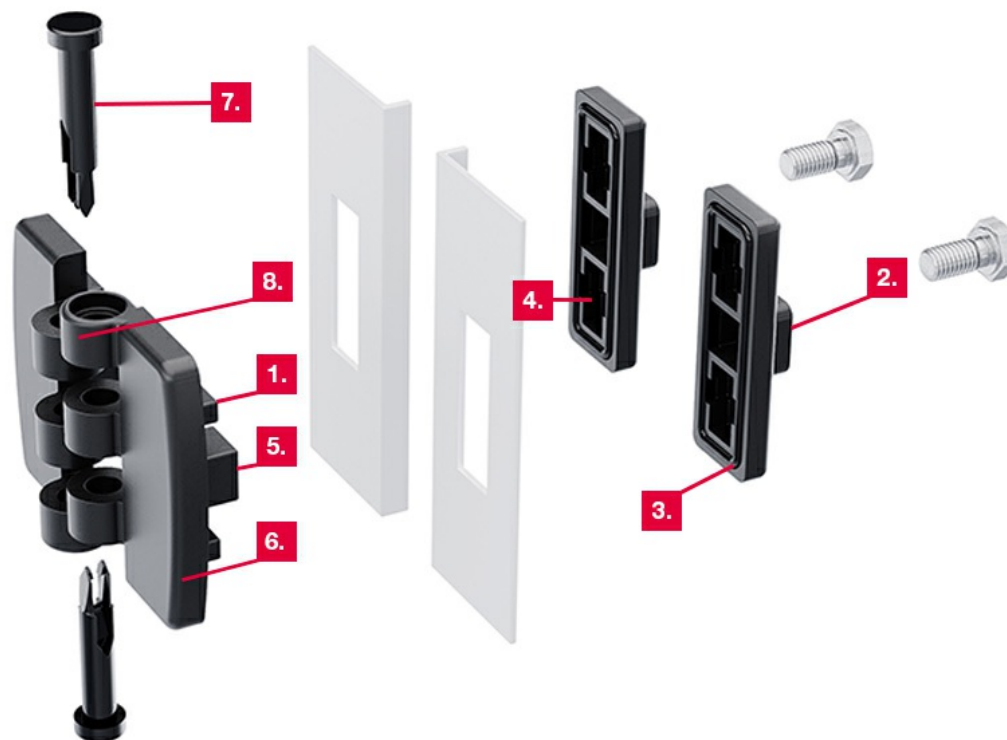
Andreas Kothmair, Quality Management



02 Product Benefits

Securely connected and well thought out design

1. The stepped mounting surface on the back of the hinge allows for easy alignment and a precise fit in the cutout
2. The fastening bracket allows for easy installation using only one screw per hinge half
3. IP 65/67 according to DIN EN 60529 (uniform sealing after tightening)
4. The use of oversized cutouts allow for vertical adjustments
5. The recessed fastening bracket is designed to connect to the back of the hinge to prevent the hinge from twisting
6. The hinge halves can be mounted independently to the door and frame parts
7. The hinge halves can be assembled by hand using the two-part POM hinge-pin (disassembly is no longer possible after the POM hinge-pin has been assembled)
8. Six knuckles in the hinge's design ensure strength and durability



Universally applicable

In addition to its quick and easy installation, the hinge with fastening bracket offers the following product features:

- To accommodate various applications, the hinge is available in three sizes: 50×40, 54×50, 60×60
- Bracket with permanent/attached seal for secure fastening to sheet metal
- Pin is secured against forced removal
- For nested doors
- Hinge visible
- 180° opening angle
- Suitable for outdoor applications
- RH / LH application

03 Dimensions / Order Options

Materials

Hinge halves and bracket: zinc die, black

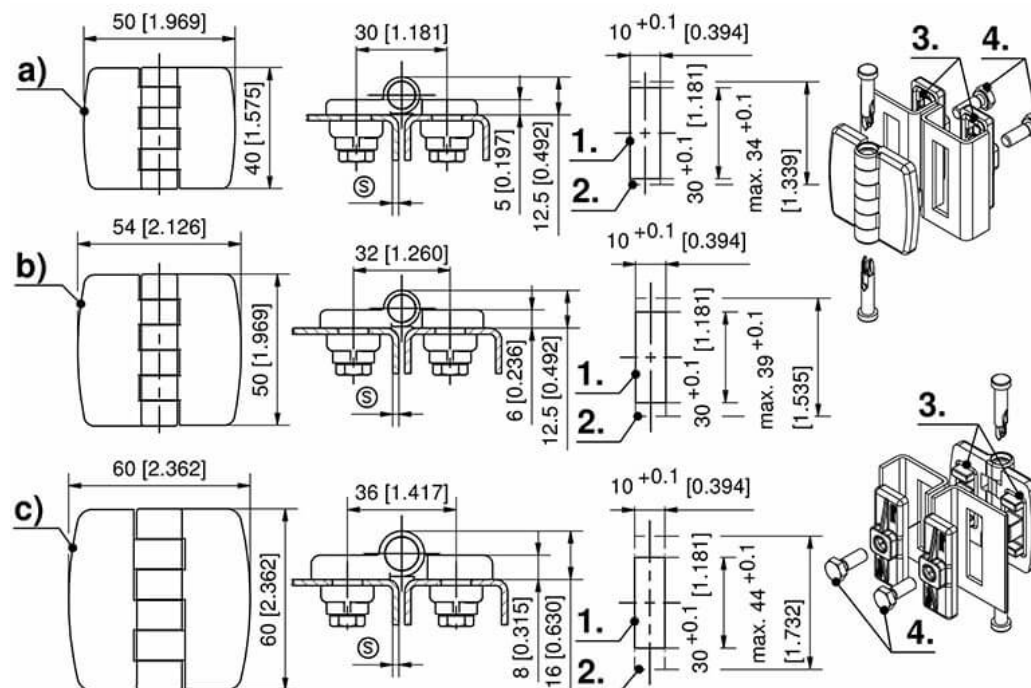
Pin: POM

Screw M6x12: zinc-plated steel

Moulded seal and o-ring: NBR

Notes

Max. material thickness 4 mm with included M6x12 mm screws. For larger material thicknesses, larger screws must be sourced.



Product System	Dimension	Min. Cutout	Max. Cutout	Adjustment	Pin Material	Installation Type	Part Number	Link
4-251	50×40 mm	10×30 mm	10×34 mm	+/- 2 mm	POM	screw-on	218-9801.00-00000	
4-251	54×50 mm	10×30 mm	10×39 mm	+/- 4.5 mm	POM	screw-on	218-9802.00-00000	
4-251	60×60 mm	10×30 mm	10×44 mm	+/- 7 mm	POM	screw-on	218-9803.00-00000	

Contact



DIRAK GmbH –
A Member of DIRAK Group

DIRAK Dieter Ramsauer
Konstruktionselemente GmbH
Königsfelder Straße 1
58256 Ennepetal
Germany

Phone: +49 (0) 2333 / 837-0

Fax: +49 (0) 2333 / 837-103

Email: info@dirak.de

Imprint

DIRAK Dieter Ramsauer
Konstruktionselemente GmbH
Königsfelder Straße 1
58256 Ennepetal
Germany

Phone: +49 (0) 2333 / 837-0
Fax: +49 (0) 2333 / 837-103
Email: info@dirak.de

Represented by:
Jens Boche

Entered in the trade register
Commercial Register AG Hagen,
HRB 7977
Sales Tax ID Number (VAT No.)
DE 261 585 314
Last update: June 2023