

Multi-Point System within the Door Bending – the DIRAK Rod Latch with Quarter-Turn



01 Requirements

“The two factors that are important in application areas where rod latches are used are closing convenience and functionality. Our challenge was to design a locking system with a quarter-turn that features a space-saving design and uniform sealing pressure.

Our solution: The DIRAK rod latch with quarter-turn is an extension for a multi-point system that requires little space within the door bending, with the insert outside of the sealing area and an uniform alignment of the door in just one closing process.”

Tobias Söhnchen, Product Manager



02 Product advantages

**Space-saving**

For use of quarter-turn housings with a length of 12 mm outside of the sealed area of enclosures with low space requirement inside of the door bending (18 mm)

Fast installation

The DIRAK rod latch snaps tool-less in place in the housing

Smooth operation

The DIRAK rod latch offers a high level of closing convenience and strength in just one closing process, compared to conventional solutions

Practical

For fast installation of flat rods by hanging

Ergonomic

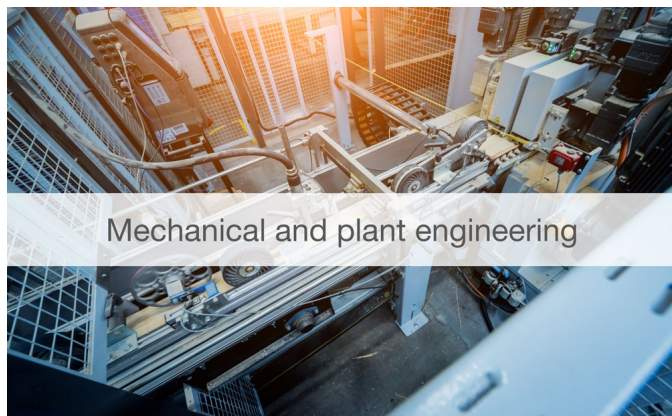
A 90° activation process allows for a 20 mm stroke of the rods that are used

Grounded

By installing a grounding nut

03 Application areas

The DIRAK rod latch with quarter-turn offers an optimum solution for a wide range of different application areas outside of the sealing area.

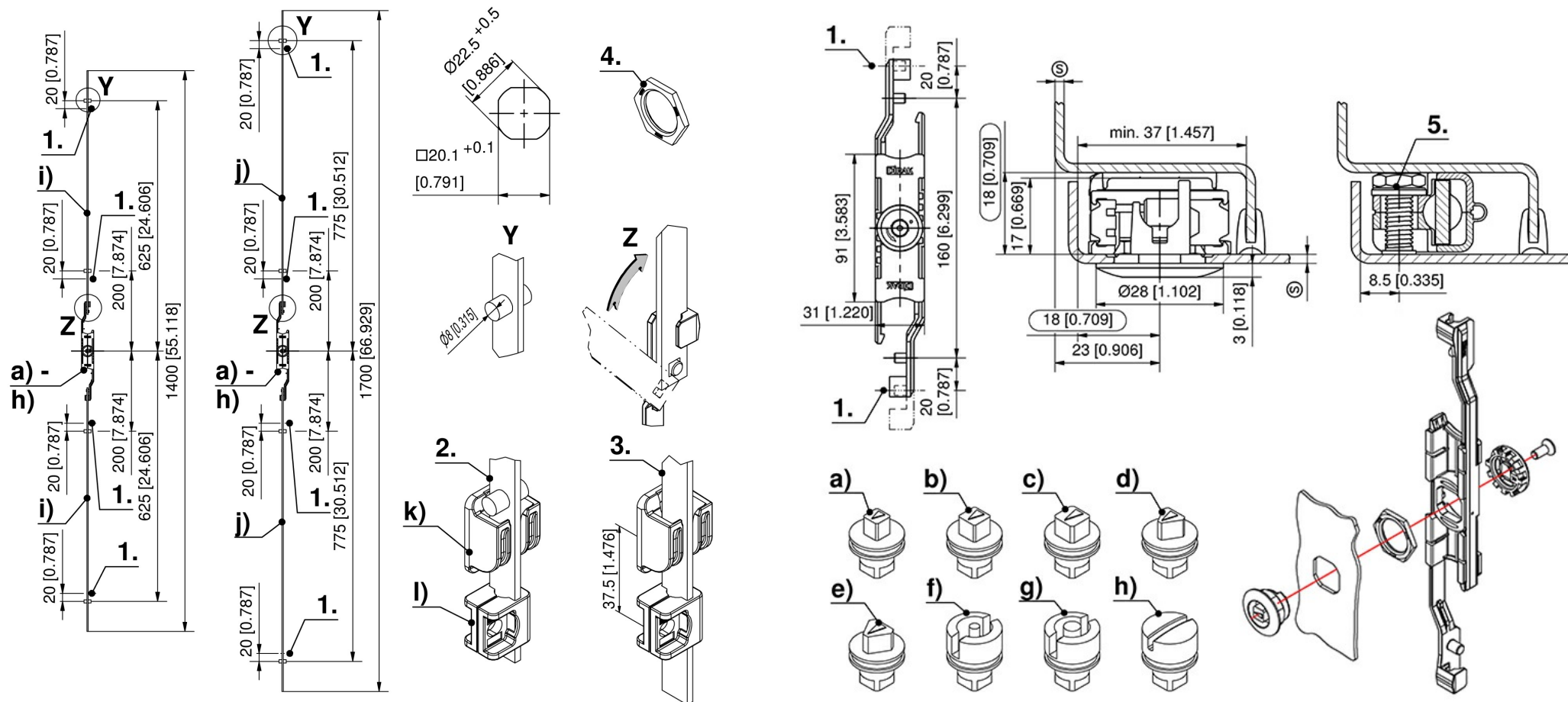


Interested?

We would be happy to become familiar with your application as well and find a solution that is tailor-made to meet your requirements.

Our contact information can be found on our website, simply click [here](#).

04 Dimensions



MaterialsRod latch:

Base plate: PA, black

Driving rod, pinion and grounding nut: zinc die, untreated

Quarter-turn:

Housing, insert: zinc die, chrome plated or black

Washer: steel, zinc plated

Comments


1. Stroke
2. Open state
3. Closed state
4. Grounding is possible with single-sided grounding nut of the quarter-turn
5. Welding stud M6x18 mm, nut DIN439 M6, washer DIN125 6,5

2-part (rod latch with quarter-turn): Please combine the rod latch with quarter-turn (a) with the corresponding rods (b)



05 Order options

Rod latch with quarter-turn L12



	Product system	Part number	Insert	Surface of quarter-turn	Type of installation for quarter-turn	Grounding type	Type of installation for rod latch	Rod fastening	Link
a)	1-351	200-9948.00-SQ6CH	Square 6 mm	Chrome-plated	Screw-on	Single-sided grounding nut	Snap-fit	Quick fastening	
b)	1-351	200-9948.00-SQ7CH	Square 7 mm	Chrome-plated	Screw-on	Single-sided grounding nut	Snap-fit	Quick fastening	
c)	1-351	200-9948.00-SQ8CH	Square 8 mm	Chrome-plated	Screw-on	Single-sided grounding nut	Snap-fit	Quick fastening	
d)	1-351	200-9948.00-TR7CH	Triangular 7 mm	Chrome-plated	Screw-on	Single-sided grounding nut	Snap-fit	Quick fastening	
e)	1-351	200-9948.00-TR8CH	Triangular 8 mm	Chrome-plated	Screw-on	Single-sided grounding nut	Snap-fit	Quick fastening	
f)	1-351	200-9948.00-DB3CH	Double bit 3 mm bolt	Chrome-plated	Screw-on	Single-sided grounding nut	Snap-fit	Quick fastening	
g)	1-351	200-9948.00-DB5CH	Double bit 5 mm bolt	Chrome-plated	Screw-on	Single-sided grounding nut	Snap-fit	Quick fastening	
h)	1-351	200-9948.00-SLOCH	Slotted 2 x 4 mm	Chrome-plated	Screw-on	Single-sided grounding nut	Snap-fit	Quick fastening	

	Product system	Part number	Insert	Surface of quarter-turn	Type of installation for quarter-turn	Grounding type	Type of installation for rod latch	Rod fastening	Link
a)	1-351	200-9948.00-SQ6BL	Square 6 mm	Black	Screw-on	Single-sided grounding nut	Snap-fit	Quick fastening	
b)	1-351	200-9948.00-SQ7BL	Square 7 mm	Black	Screw-on	Single-sided grounding nut	Snap-fit	Quick fastening	
c)	1-351	200-9948.00-SQ8BL	Square 8 mm	Black	Screw-on	Single-sided grounding nut	Snap-fit	Quick fastening	
d)	1-351	200-9948.00-TR7BL	Triangular 7 mm	Black	Screw-on	Single-sided grounding nut	Snap-fit	Quick fastening	
e)	1-351	200-9948.00-TR8BL	Triangular 8 mm	Black	Screw-on	Single-sided grounding nut	Snap-fit	Quick fastening	
f)	1-351	200-9948.00-DB3BL	Double bit 3 mm bolt	Black	Screw-on	Single-sided grounding nut	Snap-fit	Quick fastening	
g)	1-351	2200-9948.00-DB5BL	Double bit 5 mm bolt	Black	Screw-on	Single-sided grounding nut	Snap-fit	Quick fastening	
h)	1-351	200-9948.00-SLOBL	Slotted 2 x 4 mm	Black	Screw-on	Single-sided grounding nut	Snap-fit	Quick fastening	

Rods with dual rollers

	Part number	Door height	Number of locking points	Dual roller pin A	Dual roller pin B	Total dimension extended C	Link
i)	208-9801.00-00000	1400 – 1700 mm	4	200	625	1400	
j)	208-9802.00-00000	1700 – 2000 mm	4	200	775	1700	

Specific accessories

	Product system	Part number	Name	Link
k)	3-905	208-1453.50-00000	Double hook FS 18 mm	
l)	3-904	208-1528.54-00000	Rod guide FS/RS 18 mm	

Did you know?

Practical and convenient: Our dual hook with low space requirement inside the door bending, 18 mm.



>> Further information

Especially smooth operation: Our dual rod guide, now also for a door bending space of 20 mm, for use with a 2 mm metal sheet.



>> Further information

To make sure not to miss any of our new DIRAK products, simply register [here](#) for our newsletter.

Contact



DIRAK GmbH –
A Member of DIRAK Group

DIRAK Dieter Ramsauer
Konstruktionselemente GmbH
Königsfelder Straße 1
58256 Ennepetal
Germany

Phone: +49 (0) 2333 / 837-0

Fax: +49 (0) 2333 / 837-103

Email: info@dirak.de

Imprint

DIRAK Dieter Ramsauer
Konstruktionselemente GmbH
Königsfelder Straße 1
58256 Ennepetal
Germany

Phone: +49 (0) 2333 / 837-0
Fax: +49 (0) 2333 / 837-103
Email: info@dirak.de

Represented by:
Jens Boche

Entered in the trade register
Commercial Register AG Hagen,
HRB 7977
Sales Tax ID Number (VAT No.)
DE 261 585 314
Last update: June 2023