

Flexible and robust in any application and
each field of use – the lift-off stainless steel hinge
for nested doors



01 Requirements

“Hinges should be particularly durable and robust both in exterior areas as well as in various other applications such as transportation, infrastructure, and tunnel engineering or in energy and environmental technology.

For this reason, we have developed a hinge made of stainless steel

AISI 316, which is resistant to corrosion, weather and chemicals.”

Christine Pettmann
Key Account Management



02 Product benefits

Flexibility and comfort in a single application

Due to the lift-off function of the hinge, it can be easily removed towards the front. Due to the opening angle of 180°, the door can be completely opened via the frame and as a result provides unimpeded access to the interior. The spacers for 1.5 mm and 2 mm door thicknesses expand the area of use of the stainless steel hinge and provide flexibility.

- For nested doors
- Hinge is visible
- RH and LH versions
- 180° opening angle
- The door can be removed easily due to the lift-off function of the hinge
- Vandal-proof fastening from the inside with M6 screws
- Spacers for doors with thickness of 1.5 mm and 2 mm

Robust and durable

Due to its resistance to weather, corrosion and chemicals, the hinge made of stainless steel AISI 316 can be used in the most diverse areas of application. Stainless steel washers between the joints ensure a high number of cycles and accordingly also enable a long service life.

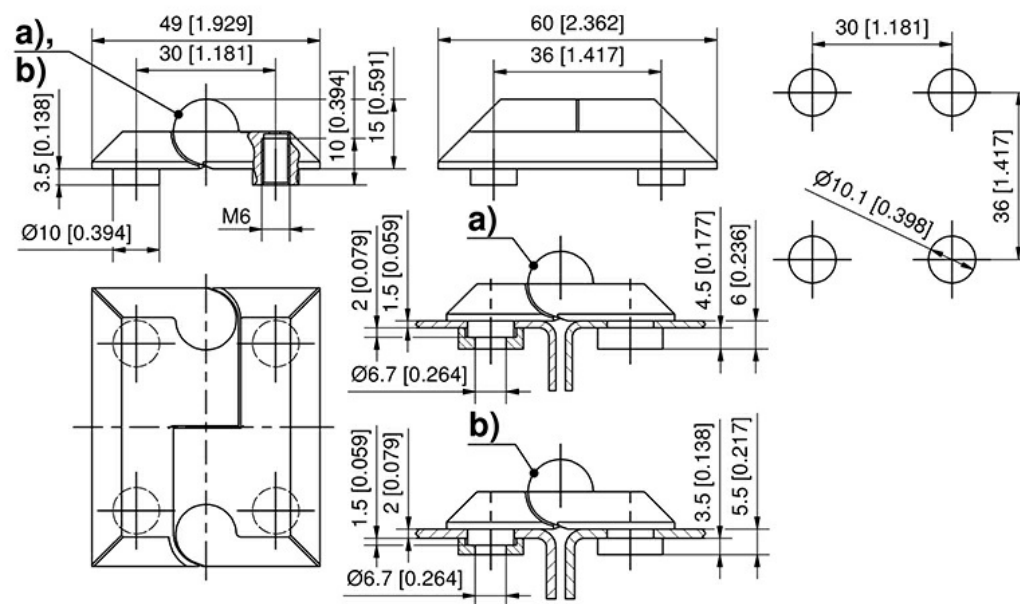
- Insensitivity against dirt due to rounded edges
- Closed and sand-blasted surface (suitable for additional surface treatments)

03 Dimensions / Order options

Material

Hinge halves , pin and spacer: Stainless steel AISI 316

Washer: Stainless steel AISI 303



Product system	Description	Spacer	Material pin	Part number	Link
7-206	Hinge, RH	1.5 mm (a)	Stainless steel	218-9012.00-00015	
7-206	Hinge, RH	2 mm (b)	Stainless steel	218-9012.00-00020	
7-206	Hinge, LH	1.5 mm (a)	Stainless steel	218-9013.00-00015	
7-206	Hinge, LH	2 mm (b)	Stainless steel	218-9013.00-00020	

Contact



DIRAK GmbH –
A Member of DIRAK Group

DIRAK Dieter Ramsauer
Konstruktionselemente GmbH
Königsfelder Straße 1
58256 Ennepetal
Germany

Phone: +49 (0) 2333 / 837-0

Fax: +49 (0) 2333 / 837-103

Email: info@dirak.de

Imprint

DIRAK Dieter Ramsauer
Konstruktionselemente GmbH
Königsfelder Straße 1
58256 Ennepetal
Germany

Phone: +49 (0) 2333 / 837-0
Fax: +49 (0) 2333 / 837-103
Email: info@dirak.de

Represented by:
Jens Boche

Entered in the trade register
Commercial Register AG Hagen,
HRB 7977
Sales Tax ID Number (VAT No.)
DE 261 585 314
Last update: June 2023