

The perfect Solution for Multi-Point Locking: The DIRAK Rod Latch for Quarter-Turns



01 Requirements

The use of single-point locking systems is often not sufficient in areas where reliable, simple and flexible locking plays an important role.

Our solution: The DIRAK rod latch for quarter-turns as an extension to form a multi-point locking system for an easy and reliable locking in one process.

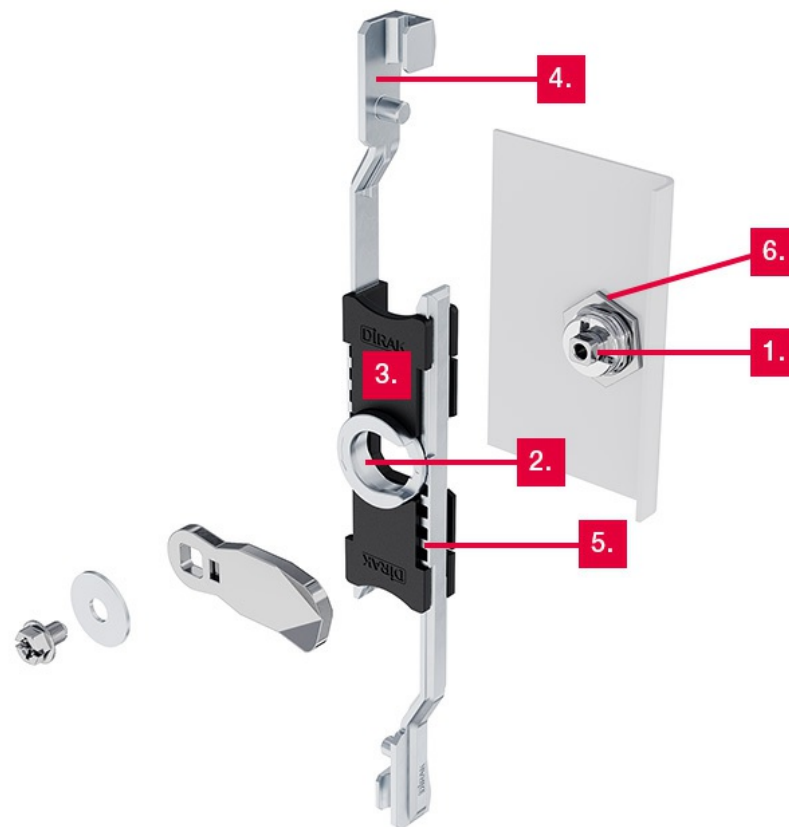
Sandra Veith, Produktmanagement



02 Product advantages

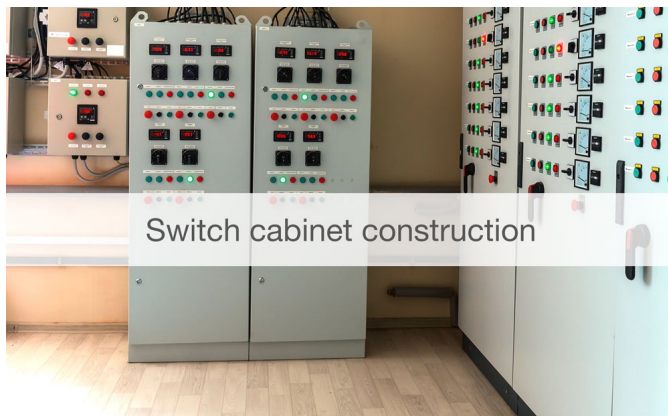
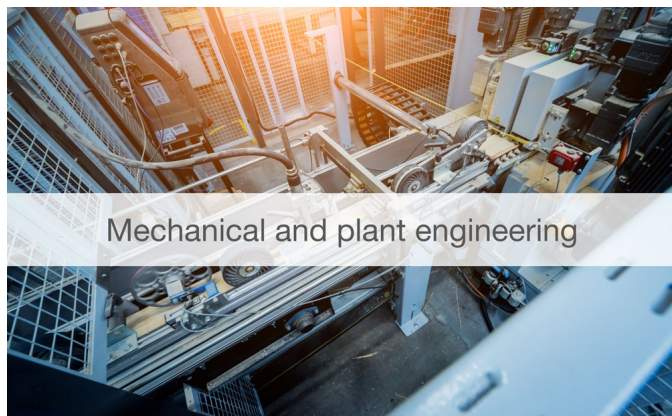
Especially easy and simple to operate

1. Easy to integrate: For all standard quarter-turn housings 18 mm in length
2. Fast installation: The DIRAK rod latch snaps tool-less in place on the housing
3. Smooth operation: Compared to conventional solutions the DIRAK rod latch offers a high level of closing convenience and strength in just one closing process
4. Adaptive: The dual rod holder allows fast installation by attaching round or flat rods
5. Ergonomic: At 90° operation – stroke = 20 mm
6. Conductive: By installation of a grounding nut



03 Application areas

The DIRAK rod latch for quarter-turns offers the perfect solution for a wide range of different applications within the sealing area.



Interested?

We would be happy to become familiar with your application as well and find a solution that is tailor-made to meet your requirements.

Additional information can be found on our website. Simply click [here](#).

Do you need the DIRAK rod latch for quarter-turns outside of the sealing area?

No problem, you can now have an exclusive first look at our upcoming new product. Simply click **here** and discover the impressive advantages for yourself.

To make sure you do not miss the product launch of the DIRAK rod latch outside of the sealing area, simply register **here** for our newsletter.



04 Dimensions / ordering options

Materials

Base plate: PA, black

Drive rods, pinions: zinc die, untreated

Washer: steel, zinc plated

Remarks

Can only be installed with cam.

Grounding of the quarter-turn with grounding nut possible.

1. Stroke

2. Matching round rods with rollers, with eye rotated by 180° available on request.

(Round rods with rollers from product system 1-170 cannot be used).

(S) Door thickness = 1.5 – 2.5 mm

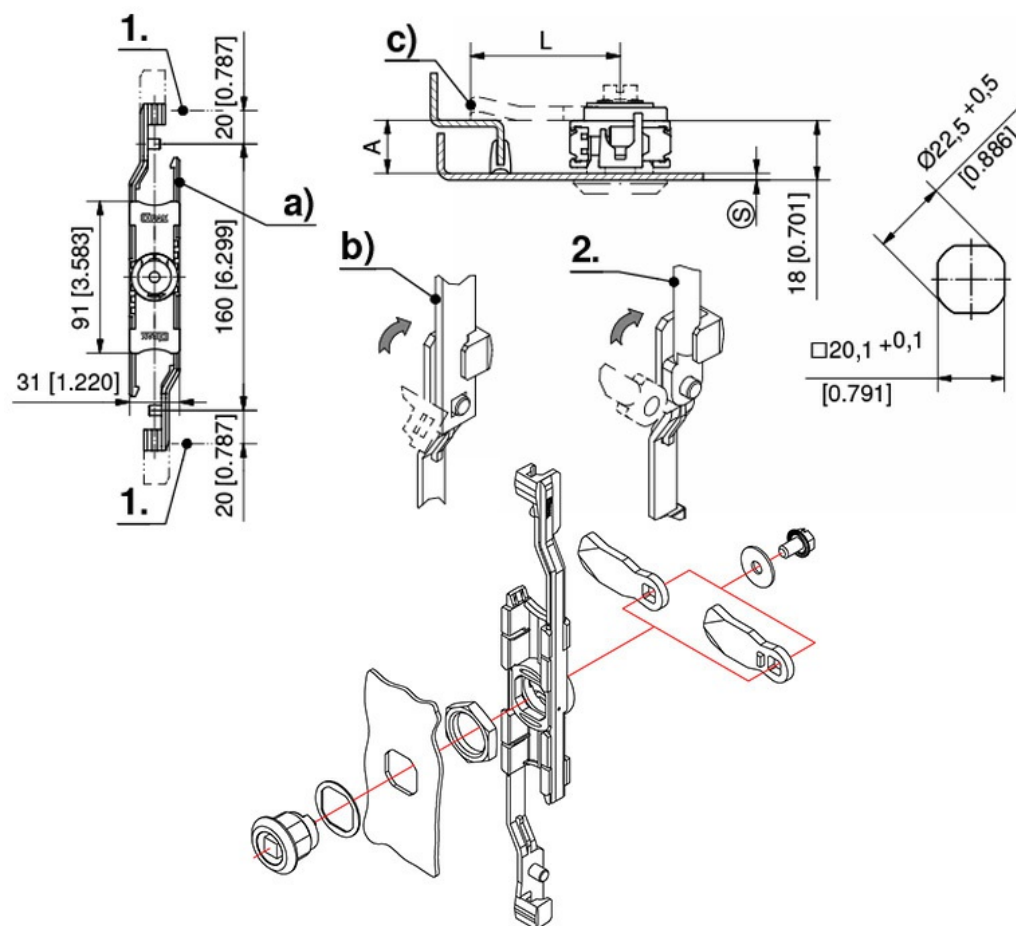
a) Rod latch for quarter-turns

b) Flat rod 14×3 mm


c) Cam with and without stop

Formula for rods: Installation opening at center of door

$$L = \frac{\text{clearance} - 10 \text{ mm (tolerance)} - \text{rod latch dimension in retracted state}}{2}$$



Order options

Product system	Rod fastening	Mounting type	Product number	Link
1-350	Quick-fit	Snap-fit	200-9947.00-00000	

Contact



DIRAK GmbH –
A Member of DIRAK Group

DIRAK Dieter Ramsauer
Konstruktionselemente GmbH
Königsfelder Straße 1
58256 Ennepetal
Germany

Phone: +49 (0) 2333 / 837-0

Fax: +49 (0) 2333 / 837-103

Email: info@dirak.de

Imprint

DIRAK Dieter Ramsauer
Konstruktionselemente GmbH
Königsfelder Straße 1
58256 Ennepetal
Germany

Phone: +49 (0) 2333 / 837-0
Fax: +49 (0) 2333 / 837-103
Email: info@dirak.de

Represented by:
Jens Boche

Entered in the trade register
Commercial Register AG Hagen,
HRB 7977
Sales Tax ID Number (VAT No.)
DE 261 585 314
Last update: June 2023